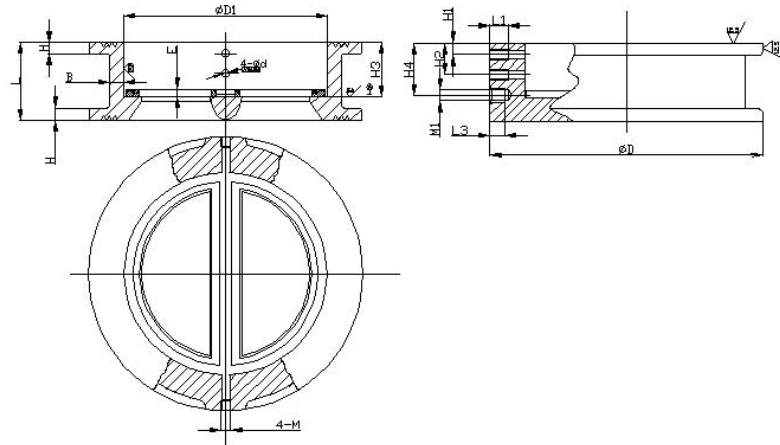


Clapet Double Battant



Remarques :

1. Flange according to EN 1092-2:1997
2. Media: water
3. External and internal coating: 100% fusion-bonded epoxy

MATÉRIAU POUR LES PIÈCES PRINCIPALES

No.	Part	Material
1	Body	Cast Iron
2	Disc	Ductile Iron
3	Spring	Stainless steel
4	seal	EPDM
5	Stem	Carbon steel

DIMENSION : MM

SIZE	L	D			D1	H	H1	H2	H3	d	M	L1	E	B	H4	M1	ø	L3
		PN10	PN16	PN26														
DN40 (1.5")	43	92	92	57	9	7	19	32.8	5.1	M6	8	4	10	—	—	—	—	—
DN50 (2")	43	107	105	65	9	7	19	32.9	6.5	M8	10	4	9	—	—	—	—	—
DN65 (2.5")	46	127	125	80	10	6	20	33.9	6.5	M8	10	5	10	—	—	—	—	—
DN80 (3")	64	142	140	94	10	8	28	43.9	6.5	M8	12	5	11	—	—	—	—	—
DN100 (4")	64	162	166	117	10	9	27	47.9	8.5	M10	12	4	13	—	—	—	—	—
DN125 (5")	70	192	191	145	12	9	30	50	8.5	M10	14	5	13	—	—	—	—	—
DN150 (6")	76	218	221	171	12	10	31	52	10.5	M12	11	5	15	—	—	—	—	—
DN200 (8")	89	273	281	224	13	10	33	58	10.5	M12	11	5	17	64	M10	ø16	15	—
DN250 (10")	114	328	338	265	18	20	50	78	14.2	M16	18	5	20	72	M10	ø16	16	—
DN300 (12")	114	378	398	310	18	13	43	74	14.2	M16	18	5	22	68	M12	ø16	18	—
DN350 (14")	127	438	—	360	20	13	44	79	14.2	M16	25	5	24	70	M12	ø16	20	—
DN400 (16")	140	488	—	410	23	15	52	88	17.5	M20	25	5	25	87	M12	ø16	20	—
DN450 (18")	152	538	554	—	454	25	58	98	21	M24	30	5	29	93	M12	ø16	20	—
DN500 (20")	152	592	616	—	505	25	58	100	21	M24	27	5	28	103	M16	ø16	22	—
DN600 (24")	178	720	—	—	624	30	73	124	22.5	M27	25	6	28	123	M16	ø16	22	—