

Applications

- Water supply
- Industry pressure boosting
- Industry liquid transfer
- Water treatment
- Irrigation

Motor

- Fitted with a totally enclosed fan-cooled, 2-pole motor
- Enclosure class: IP55
- Insulation class: F
- Supply voltage: 50Hz or 60Hz

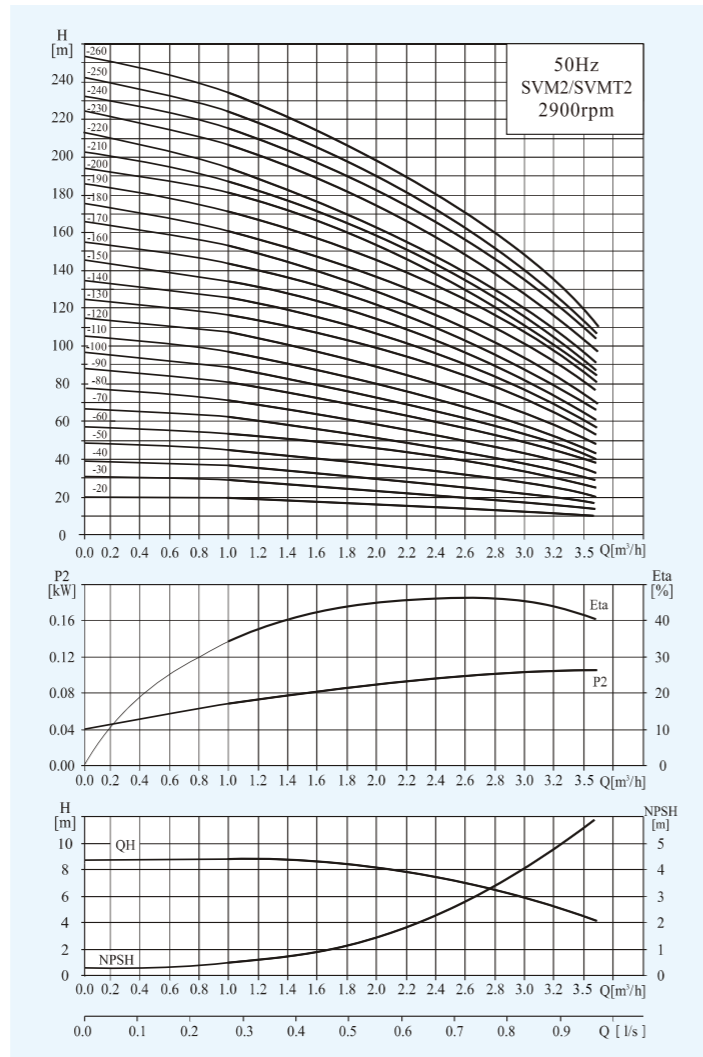
Operation conditions

- Thin, clean, non-explosive liquids, not containing solid particles or fibers liquid
- Liquid temperature: normal temperature type: $-15^{\circ}\text{C} \sim +70^{\circ}\text{C}$
hot water type: $-15^{\circ}\text{C} \sim +105^{\circ}\text{C}$
- Ambient temperature: maximum $+40^{\circ}\text{C}$
- Altitude: maximum 1000m

Material

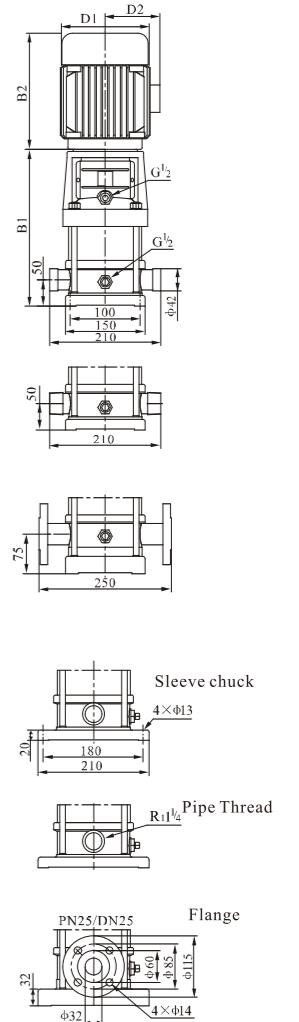
- Inlet&outlet chamber: Cast iron/Stainless steel(304/316)
- Impeller: Stainless steel(304/316)
- Shell: Stainless steel(304/316)
- Shaft: Stainless steel(304/316)
- Coupling: Ductile iron
- Bearing: Tungsten carbide
- Mechanical seal: Tungsten carbide/Graphite

Performance Curves



Performance Table

Model	Associated motor(kW)	Q (m³/h)	H (m)								
			1	1.2	1.6	2.0	2.4	2.8	3.2	3.5	
SVM2-20	0.37	H (m)	18	17	16	15	13	12	10	8	
SVM2-30	0.37		27	26	24	22	20	18	15	12	
SVM2-40	0.55		36	35	33	30	26	24	20	16	
SVM2-50	0.55		45	43	40	37	33	30	24	20	
SVM2-60	0.75		53	52	50	45	40	36	30	24	
SVM2-70	0.75		63	61	57	52	47	41	35	28	
SVM2-90	1.1		80	78	73	67	61	54	45	37	
SVM2-110	1.1		98	95	89	82	73	64	54	44	
SVM2-130	1.5		116	114	106	98	89	78	65	52	
SVM2-150	1.5		134	130	123	112	100	90	73	60	
SVM2-180	2.2		161	157	148	136	121	108	91	76	
SVM2-220	2.2		197	192	180	165	148	130	110	90	
SVM2-260	3.0		232	228	214	198	179	158	130	110	



Dimension & Weight

Model	Size (mm)					Net Weight(kg)
	B1	B2	B1+B2	D1	D2	
SVM2-20	258	225	483	148	117	20
SVM2-30	276	225	501	148	117	20
SVM2-40	294	225	519	148	117	22
SVM2-50	312	225	537	148	117	23
SVM2-60	340	245	585	170	142	26
SVM2-70	358	245	603	170	142	26
SVM2-90	394	245	639	170	142	28
SVM2-110	430	245	675	170	142	29
SVM2-130	476	290	766	190	155	35
SVM2-150	512	290	802	190	155	36
SVM2-180	566	290	856	190	155	41
SVM2-220	638	290	928	190	155	42
SVM2-260	720	345	1065	197	165	52